

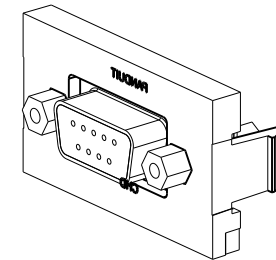
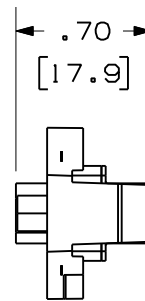
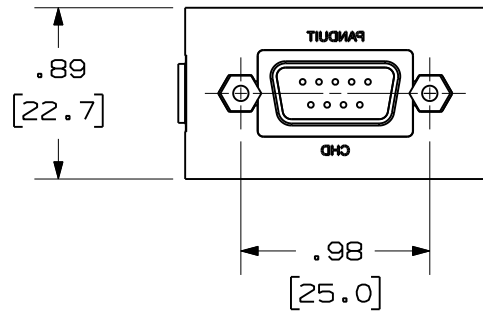
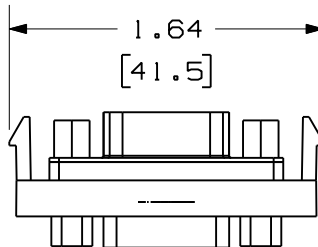
THIS COPY IS PROVIDED ON A RESTRICTED BASIS AND IS NOT TO BE USED IN ANY WAY DETRIMENTAL TO THE INTERESTS OF PANDUIT CORP.

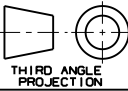

PANDUIT P/N	WEIGHT
CHD9C**	.29 LB/10 PCS (132.3 g/10 PCS)
IAPHD9CWH	



NOTES:

1. SEE CURRENT CATALOG FOR ADDITIONAL PART NUMBER SUFFIXES TO INDICATE COLOR AND OR PACKAGE QUANTITY.
2. SEE CATALOG FOR COMPLETE LIST OF PARTS APPLICABLE FOR USE WITH THIS PART.
3. DIMENSIONS IN PARENTHESES ARE IN METRIC.
4. PART TO WORK WITH ALL PANDUIT FACEPLATE FRAMES.



MODEL FILENAME		SIZE
DRAWING FILENAME	M01095AA_DC/01C	A
MINI-COM 9 PIN SVGA 1/3 INSERT COUPLER CUSTOMER DRAWING		
<b>PANDUIT</b> <sup>®</sup> TINLEY PARK, IL 60487		I.I. NUMBER
		PRODUCT SPEC/ PKG SPEC
 <p>ALL DIMENSIONS ARE GIVEN IN INCHES, UNLESS OTHERWISE SPECIFIED. DIMENSIONAL TOLERANCES ARE: (.X) ± (.XXX) ±.010(.3) (.XX) ±.03(.8) ANGLES ±</p>		ASSY METHOD/ TEST METHOD
		SCALE
DRAWN BY	JsP	 <b>SEE TABLE</b>
DATE	1-26-01	
CHK'D	PBD	DRAWING NO.
		01095-06

REV	DATE	BY	CHK	DESCRIPTION	ECN	R	CUST	SUP	OTH
2	6-6-11	BJN	JSP	B. ADDED SUPPLEMENTAL P/N IAPHD9CWH	01095-06	JSP	JSP		
1	2-16-01	JsP	PBD	A. ADDED "C" TO PART NO.	01095-06	PBD	PBD		
R	1-26-01	JsP	PBD	RELEASED TO PRODUCTION.	01095-06	PBD			